

EXPANDVIEW 3.3

GLOBAL DEPLOYMENT, CENTRALIZED MANAGEMENT & VISIBILITY

EXPANDVIEW 3.3 DELIVERS:

- Instant and Simple Global Deployments
- Centralized Management and Change Control
- Grouped Management: Business Unit, Location, Building, etc
- Schedule Daily, Weekly, and Monthly QoS Policies and Rules
- Global Alerting and Administration
- Detailed Environment-Wide Graphs and reports
- Built-in QoS, Virtual Branch Office, and Application Acceleration Templates
- Centralized Backup of Accelerator Configurations
- Manages Complete Expand Product Range
- Physical and Virtual Server implementations

EXPANDVIEW FOR MANAGED SERVICE PROVIDERS

<http://www.expand.com/products/expandview-telco.aspx>

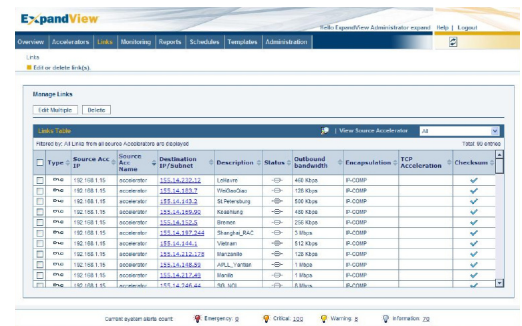
Expand’s industry leading WAN Optimization delivers an accelerated, optimized, and conditioned virtual proximity experience to industries globally. To fully leverage Expand’s unique technology, consolidating the entire environment’s application and network utilization and optimization data is imperative. Expand’s full-featured central management, reporting and alerting system, ExpandView, will deliver application fluent network statistics, optimization performance, bandwidth utilization data and configuration management to your fingertips.

Productivity and Visibility

All Expand solutions are designed with productivity, cost reduction and simplicity in mind. For network managers, productivity increases with management and reporting simplicity. By providing a simple and integrated solution, ExpandView enables IT organizations to more efficiently manage the Wide Area infrastructure—increasing visibility, predictability, control, and delivering a holistic network view.

Instant & Simple Global Deployment

Installing Expand’s WAN optimization technology is the easiest of any available today. ExpandView assists installations of any number of Expand Accelerators (virtual (VACC), appliance, or software based) bringing remote device configuration down to just two short and simple steps. Once an automated deployment plan is in place, it can scale to any size corporation, in fact, Expand has installed and supports the largest WAN optimized environments in the world today. In more complex environments or resource limited businesses, Expand offers excellent professional services to assist with installing your accelerators, building automated rollout plans with ExpandView, and even revisiting installations to provide ongoing health checks to keep it performing at it’s best.



Automated Configuration

ExpandView 3.3 takes the complexity out of configuring WAN optimization. It automatically detects all deployed Accelerators and builds configuration and performance data for each. As new Accelerators are powered up, ExpandView 3.3 will automatically update the Accelerator with all preconfigured parameters and start collecting statistics, monitoring, and alerting on its status.

Advanced Alerts for World-Class NOCs

ExpandView generates alerts on application performance thresholds for remote Accelerators enabling proactive performance management, acceleration percentage, CPU utilization and a multitude of other parameters can be used to predict WAN performance incidents, before they happen, giving administrators direct access to correct them.

End-to-End WAN Performance Visibility

ExpandView is a dynamic application that monitors performance across the WAN, enabling global network visibility. ExpandView leverages the powerful and flexible monitoring tools of the Accelerator and enables complete network statistics collection and analysis.

Scalable Templates and Configuration Tools

ExpandView enables group configuration of QoS templates, application acceleration parameters, and optimization settings. New policies can be published to multiple devices in a single step, and QoS policy and system configuration consistency is enforced through user specific change control. ExpandView also includes a complete scheduling system for actively automating QoS policies and rules across the entire wide area network. Expand's QoS, simple to configure, maintain, and low cost to administer, is now made even easier in this new scalable solution.

Proactive Trending for Network Provisioning

Trend reports can be generated detailing anticipated future utilization of WAN links based on previous usage and performance of the links. Such reports are useful in helping determine TCO, ROI, and assisting IT provision networks to accommodate business growth.

Physical and Virtual implementations

ExpandView enables organizations to centrally manage their Expand WAN optimization solution from a Physical Windows server platform. ExpandView Virtual allows organizations to take full advantage of a virtualized server platform, resulting in greater flexibility and scalability. ExpandView Virtual can be deployed in a VMware ESX, ESXi, and VSphere 4 environment. Multiple instances of ExpandView Virtual can be implemented for service provider operations and/or large scale Expand Accelerator deployments.

TECHNICAL SPECIFICATION

OPERATING SYSTEM	COMPATIBLE PROCESSOR / MONITOR	MEMORY / SPACE REQUIREMENTS
Windows 2000 Server or Windows 2003 Server Java: Java SDK 1.4.2 (can be found within the Windows folder on ExpandView installation CD-ROM).	Pentium IV compatible processor with 2.8 GHz or higher. Video display with 1024 x 768 resolution.	Minimum of 1 GB of RAM CD-ROM Drive Disk Space: Minimum 20 GB free hard disk space. Disk space requirements depend on the number of Accelerators connected to ExpandView.
VMware ESX, ESXi, and VSphere 4 Virtualisation ExpandView Virtual runs on top of Windows Server OS in VMware environments	Virtual processor with 2.8 GHz or higher.	As above

NUMBER OF ACCELERATORS	ESTIMATED DISK SPACE (GB)	RAM(GB)
1-50	20	1
	40	1.5
50-100	80	2.0

CLIENT
Internet Explorer browser version 6 and 7. SUN Java Runtime Environment (JRE) version 1.4.2 and above.